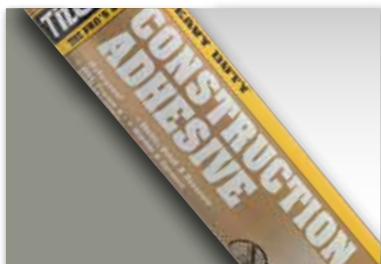




CONSTRUCTION ADHESIVES



titebond.com | 800.347.4583



HEAVY DUTY

Versatile adhesive for construction, remodeling and repair. Designed for a wide range of building materials including wet, frozen and treated lumber, wood, metal, brick and concrete.

- High-strength, waterproof adhesion
- Remains permanently flexible
- Exceeds AFG-01, ASTM D3498 & ASTM C557

size	item #	units/case	cases/pallet
Gallon Can	25266	2	75
10 oz Cartridge	5261	12	108
28 oz Cartridge	5262	12	44
5 Gallon Pail	5267	1	36
52 Gallon Drum	5268	1	4



PROVANTAGE HEAVY DUTY

Premium VOC-compliant formula for more demanding jobs. Offers superior strength for interior and exterior applications. Designed for wood, metal, brick, concrete and ceramics.

- Reduces nailing & fills gaps
- Extrudes easily in severe weather down to 0°F.
- Exceeds AFG-01, ASTM C557 & ASTM D3498

size	item #	units/case	cases/pallet
10 oz Cartridge	5251	12	108
28 oz Cartridge	5252	12	44



GREENCHOICE HEAVY DUTY

VOC-compliant formula, with all-purpose versatility for common building materials. Provides a strong grab, fills gaps and irregularities and remains permanently flexible.

- Nonflammable
- Easy water clean-up in wet state
- Exceeds AFG-01 & ASTM C557

size	item #	units/case	cases/pallet
10 oz Cartridge	7471	12	108
28 oz Cartridge	7472	12	44
3.5 Gallon Pail	7479	1	36



FAST SET POLYURETHANE

Highest performing product of its kind, designed to develop bond strength faster than traditional adhesives. Permanently bonds virtually all building materials, including non-porous substrates and is designed for interior and exterior construction projects. Offers a fast set-up time as well as a smooth bead for effortless extrusion.

- Advanced polyurethane technology
- No drool performance
- Safe for plastic and foam

size	item #	units/case	cases/pallet
10 oz Cartridge	4221	12	108
28 oz Cartridge	4222	12	44



TITEGRAB ADVANCED POLYMER

Advanced polymer formula, specifically designed to decrease installation time of vertical applications. Waterproof and weather resistant adhesive, ideal for bonding virtually all building materials instantly without slippage. Uniquely designed for bonding most building substrates especially large panels, wallboards and mirrors.

- Reduces time & amount of bracing needed
- For indoor or outdoor use
- Does not dry brittle or shrink

size	item #	units/case	cases/pallet
9.5 oz Cartridge	6701	12	64



ALL WEATHER SUBFLOOR

Ideal choice for subfloor installations. Designed for plywood, engineered lumber, OSB, particleboard, wet, frozen and treated lumber. Fills irregularities to provide a more solid backup surface.

- Strong initial tack with superior strength & flexibility
- Works well in colder temperatures
- Exceeds AFG-01, ASTM D3498, ASTM C557, CAN/CGSB-71.25M & CAN/CGSB-71.26M

size	item #	units/case	cases/pallet
10 oz Cartridge	5491	12	108
28 oz Cartridge	5492	12	44



PROVANTAGE SUBFLOOR

High-performance VOC-compliant formula ideal for subfloor installations. Ideal for plywood, engineered lumber, OSB, wet, frozen and treated lumber. Helps to reduce nailing and eliminate floor squeaks.

- Strong initial tack and remains permanently flexible
- Easily extrudes from 0°F - 100°F
- Exceeds AFG-01, ASTM D3498 & ASTM C557

size	item #	units/case	cases/pallet
10 oz Cartridge	5481	12	108
28 oz Cartridge	5482	12	44
52 Gallon Drum	5488	1	4



GREENCHOICE SUBFLOOR

Professional-strength, VOC-compliant formula designed for subfloor installations and plywood use. Performs well with wet, frozen and treated lumber.

- Provides a permanent bond that remains flexible
- Easy water clean-up in wet state
- Exceeds AFG-01 & ASTM C557

size	item #	units/case	cases/pallet
28 oz Cartridge	4122	12	44
52 Gallon Drum	4128	1	4



PROFESSIONAL DRYWALL

Provides professional strength for applying drywall to wood, hardboard, gypsum wallboard and aluminum. Fills irregularities and gaps in substrates.

- Excellent initial tack to prevent panels from slipping
- Unaffected by moisture & resists aging
- Exceeds ASTM C557

size	item #	units/case	cases/pallet
28 oz Cartridge	5352	12	44



PROVANTAGE DRYWALL

VOC-compliant, premium formula designed for installing drywall and paneling to most common building materials. Reduces nail pops, provides a “no sag” installation and fills gaps in substrates.

- Unaffected by moisture & resists aging
- Will not become hard or brittle
- Exceeds ASTM C557

size	item #	units/case	cases/pallet
28 oz Cartridge	5342	12	44



GREENCHOICE DRYWALL

VOC-compliant formula offers excellent adhesion, reduces nail pops and provides “no sag” installation. Bonds to plaster, wallboard, plywood, paneling and wood.

- Nonflammable
- Easy water clean-up in wet state
- Exceeds ASTM C557

size	item #	units/case	cases/pallet
28 oz Cartridge	7272	12	44



LANDSCAPE RETAINING WALL

Professional strength adhesive for use on decorative landscape and retaining wall systems. Formulated for use with concrete, stone, timber and pavers.

- Waterproof
- Works well in extreme temperatures, from 0-100°F.
- Remains permanently flexible

size	item #	units/case	cases/pallet
10 oz Cartridge	3131	12	108
28 oz Cartridge	3132	12	44



PROVANTAGE LANDSCAPE

VOC-compliant, premium formula ideal for the installation of landscape materials for retaining walls, capstones, planters and walkways. Prevents wall shifting or loosening due to seasonal changes.

- Superior adhesion strength & stability
- Can be used in extreme weather, from 0-100°F.
- Waterproof

size	item #	units/case	cases/pallet
10 oz Cartridge	3121	12	108
28 oz Cartridge	3122	12	44



GREENCHOICE PROJECTS & REPAIR

VOC-compliant, versatile interior adhesive designed for general repair and installation projects. Ideal for corkboards, ceramics, trim, tile, carpet and fabrics.

- Provides a long working time for precise placement
- Highly water resistant once dry
- Easy water clean-up in wet state

size	item #	units/case	cases/pallet
10 oz Cartridge	5311	12	108



GREENCHOICE COVE BASE

VOC-compliant adhesive provides a fast, strong grab and holds materials firmly in place while eliminating sagging. Impact resistant formula bonds to plaster, wallboard, plywood, paneling and wood.

- Bonds to all common wall surfaces
- Easy water clean-up in wet state
- Nonflammable

size	item #	units/case	cases/pallet
10.5 oz Cartridge	3401	12	108
29 oz Cartridge	3402	12	44
4 Gallon Pail	3404	1	36
Quart	3405	6	112



INTERIOR/EXTERIOR

Adheres foam insulation and panels to most building materials. Ideal for use on wood, foam, plastics, drywall and tub surrounds.

- Versatile adhesive with excellent water-resistance
- 10-minute working time allows precise material placement
- Exceeds ASTM C557

size	item #	units/case	cases/pallet
10 oz Cartridge	3451	12	108
28 oz Cartridge	3452	12	44
52 Gallon Drum	3458	1	4



PANEL & FOAMBOARD

Bonds foamboard and polystyrene to most porous materials. Ideal for use on paneling, plastics, fiberglass, metal and more.

- Permanently flexible
- Extremely versatile – bonds most building materials
- Exceeds AFG-01 & ASTM C557

size	item #	units/case	cases/pallet
28 oz Cartridge	3462	12	44



SOLVENT-BASED FRP

Versatile, water-resistant adhesive ideal for the installation of FRP, tileboard and other paneling materials.

- Extended working time allows precise material placement
- Easy to trowel
- Exceeds ASTM C557

size	item #	units/case	cases/pallet
5 Gallon Pail	3227	1	36



GREENCHOICE ADVANCED POLYMER PANEL

VOC-compliant, professional strength advanced polymer adhesive ideal for the installation of FRP, laminate and non-porous paneling materials.

- Fast grab with rapid cure rate
- Trowels easily
- Mold & mildew resistant

size	item #	units/case	cases/pallet
3.5 Gallon Pail	4319	1	36



GREENCHOICE FAST GRAB FRP

High quality, VOC-compliant adhesive offers fast grab and bonding power for minimal bracing. Ideal for the installation of FRP (fiber-reinforced plastic) panels.

- Industry's #1 FRP adhesive
- Nonflammable
- No offensive odor
- Easy water clean-up in wet state

size	item #	units/case	cases/pallet
1 Gallon Pail	4056	2	75
3.5 Gallon Pail	4059	1	36
4 Gallon Pail	4054	1	36

GREENCHOICE FAST GRAB FRP - CARTRIDGE APPLICATOR

Attachable applicator allows adhesive to be dispensed and troweled simultaneously for easy and fast application.

size	item #	units/case	cases/pallet
28 oz Cartridge	4052	12	44

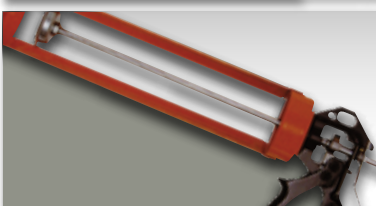


GREENCHOICE ACOUSTICAL CEILING TILE

Designed for the safe and easy installation of acoustical ceiling tiles. Offers a fast, strong grab that holds materials firmly in place and eliminates sagging. It offers excellent adhesion to common surfaces such as drywall, plaster, concrete and painted surfaces.

- Easy water clean-up in wet state
- Passes ASTM D1779

size	item #	units/case	cases/pallet
1 Gallon Pail	2706	2	75
4 Gallon Pail	2704	1	36



CARTRIDGE GUNS

Heavy duty, professional grade cartridge guns featuring 10:1 thrust ratio, hex rod parallel frame, seal punctures tool/spout cutter, ladder hook and E-Z load front cap. Model 111-CB available for 10 oz cartridges and Newborn model 125 available for 28 oz.

size	item #	units/case	cases/pallet
10 oz Gun	17803	12	66
28 oz Gun	17802	6	50